

See page 49

14-549, U. P. Ry Co. to Frederick Wheeler,
Jan'y 14-1893, Lots-3-4. of N.W. 1/4 Sec,
5. T. 6. N. R. 2. W., 79. 2^a, Feb. 18-1893,

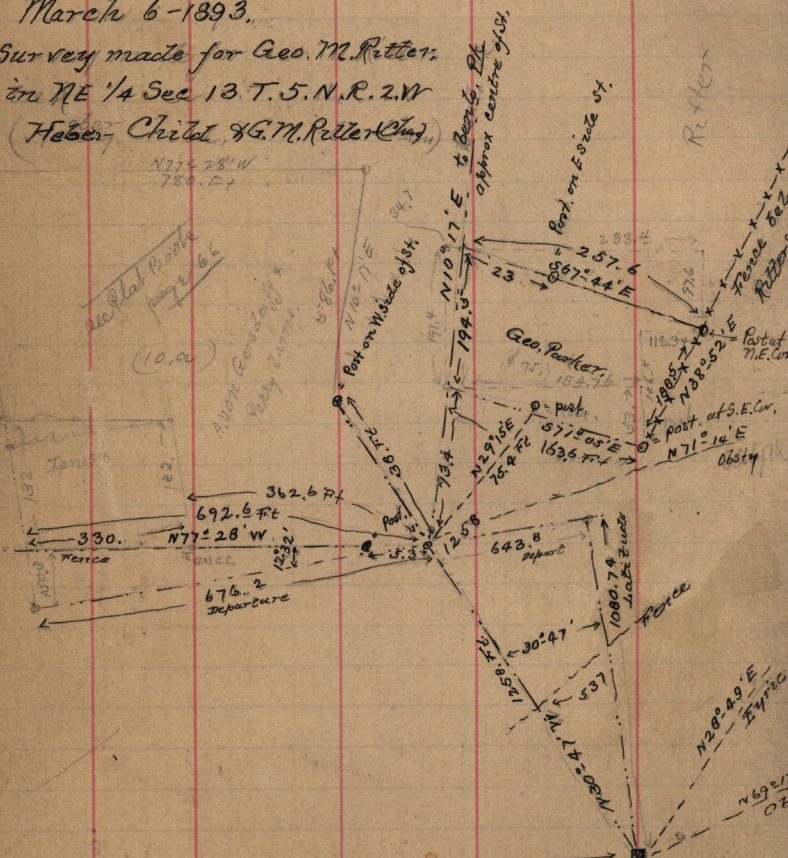
March 6-1893.

Survey made for Geo. M. Ritter;
in NE 1/4 Sec 13 T. 5. N. R. 2. W
(Heber Child & G. M. Ritter (Chas.))

N77° 28' W
780.12

see Plat Book
page 66
(10.00)

ADON CENS. & W. &
Bobby Zappa



Ties
SE 64.8 FT to N.W. cor. W.M. Cotas house
" 147.19 " " Box Elder Tree 10' diam

S.E. Cor. of N.E. 1/4 of S.
Sec. 13. T. 5. N. R. 2. W

See field Book F.

- 129 - for details. See
field book F. page 36